

# 15-100

## WATTS

### POWER SUPPLY AC/DC

#### SINGLE, DUAL OR TRIPLE OUTPUT

**Low cost**

**Conforms to UL, CSA, EN\***

**Regulation <0.1%**

**Linear Technology**

**Low ripple and noise**

**Guarantee 1 year**

**\* Contact Technical Sales for current status of approvals**

#### INPUT

Input voltage range	100-120-220-230-240 VAC ± 10%
Voltage selection	on input transformer
Frequency	47 to 63Hz

#### OUTPUT

Power (natural convection)	15 at 100W
Adjustment voltage range	± 5% minimum
Line regulation	± 0.15%
Load regulation (0 at 100% loading)	± 0.15%
PARD	3mV max.
Temperature coefficient	0.01%/°C
Over current protection	fold back
Over voltage protection on 5V models	6.2V ±0.4V
on other models	optional
Remote sense	250mV per line

#### GENERAL

Efficiency models 5V	45%
models 12/15V	55%
models 24V	60%
Isolation voltage Input-outputs grounded	1500V RMS
Input-ground	1500V RMS
Output-ground	500V DC
Isolation resistance Input-output	30MΩ
MTBF	≥50000 hours

#### ENVIRONMENTAL

Operating temperature range	0°C to +70°C
Derating (typ) 50 at 70°C	3%/°C
Storage temperature	-55°C to +85°C
Humidity (non-condensing)	5% at 90% RH

## TECHNICAL SPECIFICATIONS

### PHYSICAL SPECIFICATION

Dimensions	see table below
Weight	HSB : 0.9kg; HSC : 1.8kg; HSD : 3.4kg HSN : 2.7kg; HDA : 0.9kg; HDB : 1.8kg HDC : 3.2kg; HTC : 2.3kg; HTD : 3.6kg

### Type of connections

input/output soldered

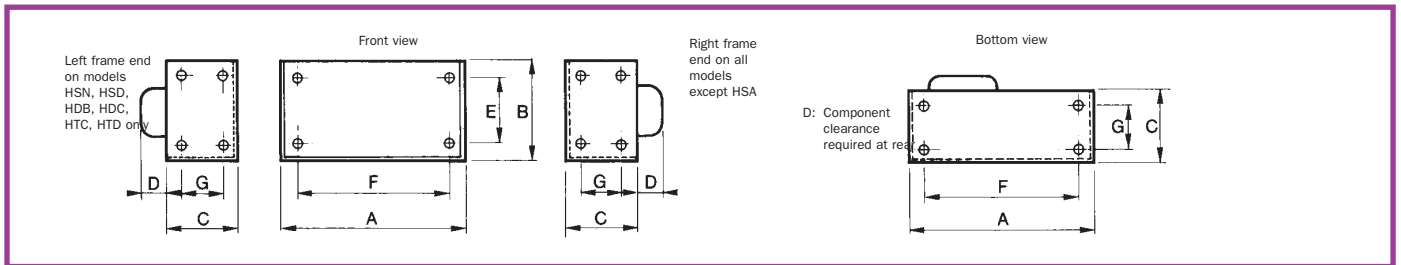
Format open frame chassis

All specifications are at nominal input voltage, full load and at 25°C

## ELECTRICAL SPECIFICATION

Model	Maximum power* Watts	Output N°1		Output N°2		Output N°3	
		Volts	Amp.	Volts	Amp.	Volts	Amp.
HSB 5-3 OVP	15	5	3				
HSC 5-6 OVP	30	5	6				
HSN 5-9 OVP	45	5	9				
HSD 5-12 OVP	60	5	12				
HSB 12-1.7	20	12	1.7				
HSC 12-3.4	40	12	3.4				
HSN12-5.1	60	12	6.1				
HSB 15-1.5	20	15	1.5				
HSC 15-3	45	15	3				
HSN 15-4.5	70	15	4.5				
HSB 24-1.2	30	24	1.2				
HSC 24-2.4	60	24	2.4				
HSN 24-3.6	90	24	3.6				
HSD 24-4.8	100	24	4.8				
HDA 12/15	24	12	1	12	1		
HDB 12/15	40	12	1.8	12	1.8		
HDC 12/15	80	12	3.4	12	3.4		
HTC 1	40	5	3	+12	1	-12	1
HTD 1	70	5	6	+12	1.7	-12	1.7

## PHYSICAL SPECIFICATION



Model	Length	Depth	Height	Extension	Fixations		
	A	B	C	D	E	F	G
HSB	124	101	41	8	86	105	-
HSC	143	124	63	12	105	124	-
HSN	178	124	70	12	105	159	32
HDB	178	124	70	12	105	159	32
HTCI	260	102	64	12	86	235	32
HTDI	280	124	70	15	105	190	32
HDA	165	102	42	8	86	146	-
HSD/HDC	229	124	70	15	105	203	32